



- Lakeshore Sales Incorporated (LSI) Manufacturer of the unique American Made **Waste Water Evaporators using “Total Evaporation Technology” (TET)**
- Combining Quality Made Equipment, systems, support and parts for commercial/industrial Total Waste Water Evaporation.
- Integrated with Oil Separators, and Waste Stream Filters, you now have a complete package to **Go Green.**



Total Evaporation Technology



Why You Need TET

Summary of the Clean Water Act

The Clean Water Act (CWA) establishes the basic structure for regulating discharges of pollutants into the waters of the United States and regulating quality standards for surface waters. The basis of the CWA was enacted in 1948 and was called the Federal Water Pollution Control Act, but the Act was significantly reorganized and expanded in 1972. "Clean Water Act" became the Act's common name with amendments in 1977.

Under the CWA, EPA has implemented pollution control programs such as setting wastewater standards for industry. We have also set water quality standards for all contaminants in surface waters.

Federal Consequences • Directed at states not achieving expectations • May include: – Assigning more stringent pollution reductions to regulated point sources (**e.g., wastewater**, storm water, CAFOs) – Objecting to state-issued NPDES permits – **Limiting or prohibiting new or expanded discharges (e.g., wastewater, storm water) of nutrients and sediment** – **Withholding, conditioning or reallocating federal grant funds.**



Total Evaporation Technology



New EPA Guidelines Starting with the East Coast

Q. What are the sources of pollution?

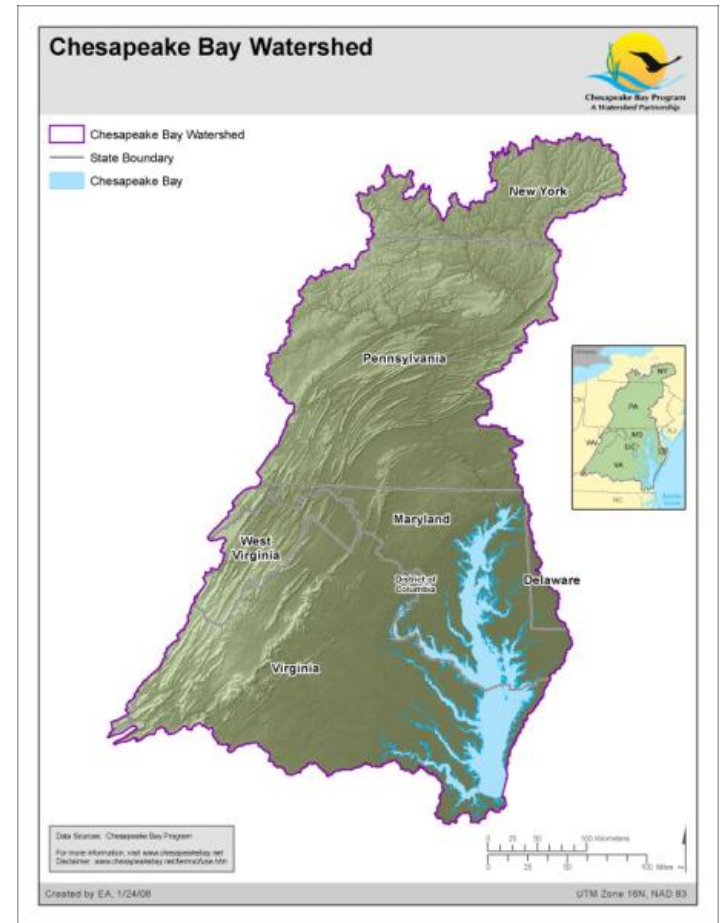
A. The high levels of nitrogen, phosphorus and sediment enter the water from a variety of sources, including agricultural operations, urban and suburban runoff, wastewater facilities, onsite septic systems, air pollution, and other sources.

Q. What action has EPA taken?

A. On December 29, 2010, the U.S. Environmental Protection Agency established the Chesapeake Bay Total Maximum Daily Load (TMDL), a historic and comprehensive “pollution diet” with rigorous accountability measures to initiate sweeping actions to restore clean water in the Chesapeake Bay and the region’s streams, creeks and rivers.

More than 40,000 TMDLs have been completed across the United States, but the Chesapeake Bay TMDL is the largest and most complex thus far – it is only a matter of time before other areas begin similar stringent regulations.

Total Evaporation Technology



Chesapeake Bay TMDL web site
www.epa.gov/chesapeakebaytmdl



Chesapeake Watershed Facts

Largest U.S. estuary

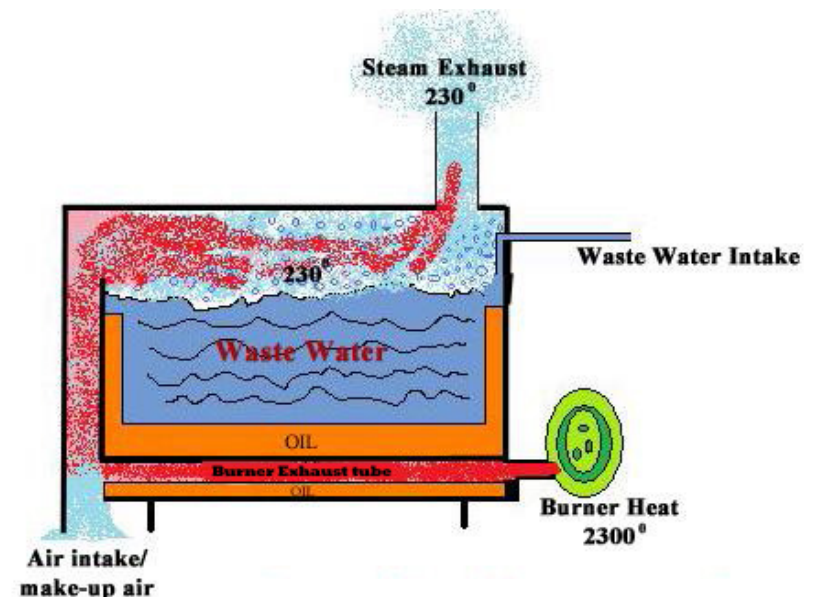
- Six-states and DC, 64,000square mile watershed
- Chesapeake Bay Watershed-By the Numbers
- 10,000 miles of shoreline (longer then entire U.S. west coast)
 - Over 3,600 species of plants, fish and other animals
 - Average depth: 21 feet
 - \$750 million contribution annually to local economies
 - Home to 17 million people (and counting)
 - 77,000 principally family farms
 - Declared “national treasure” by President Obama



How It Works

“TET” means the evaporator can be totally dry without damaging the unit.
Most waste streams are dried to a fraction of the original volume.

- LSI waste water evaporators employ the simple physical process of heating liquids to temperatures at which the water content is vaporized.
- TET evaporators are designed to closely match the energy usage with the amount of liquid to be processed.
- Coupled with draft inducers and effective venting, these features result in the highest efficiency process and negligible particle emissions.
- TET evaporators burners do not come in direct contact with the waste stream. This prevents the elements from premature breakdown and maintains the GPH rate.



Total Evaporation Technology (TET)



TET 2 Gallon Per Hour

- **The TET 2 GPH is LSI' best waste water evaporator for small volume applications.**
- **The TET 2 has an ON/OFF switch, temperature dial and redundant safety shut-off thermostats, and a fully automatic option is available.**
- **Options for LSI evaporators include clean out trays, spreader bars, advancing media filters, condensers for water recovery and custom accessories.**



TET 2 Gallon Per Hour

Total Evaporation Technology

TET Applications

- The TET waste water evaporators are perfect for waste streams from these applications and more:
- Parts Washing
- Printing Inks/Dyes
- Vehicle Washes
- Photo Processing
- Metal Fabrication
- Metal Finishing/Plating
- Floor Scrubbing Water
- Marina Bilge Water
- Air Condensation
- Ceramic Coating Wastes
- Compressor Condensate
- Degreasing Operations
- Screw Machine Shops
- Truck/ Car Washes
- Coolants
- Most Aqueous Waste Stream

TET 5 GPH is one of the most productive small volume waste water evaporators. The TET 7 GPH is the next most popular small volume evaporator.



TET 5 GPH



TET 7 GPH

Total Evaporation Technology



All TET Units are fueled by a NG (natural gas) or LPG (liquid propane gas) burner.

TET 20 GPH & TET 35 GPH are LSI' most popular waste water evaporators for mid-sized volumes.



TET 20 GPH



TET 35 GPH

Total Evaporation Technology



***Custom Evaporators
Available by Special Quote***

LSI offers custom made higher volume automatic industrial waste water evaporators, up to 400 gallons per hour.

The evaporators automatically monitor and control the level of waste water in the unit's evaporation chamber.



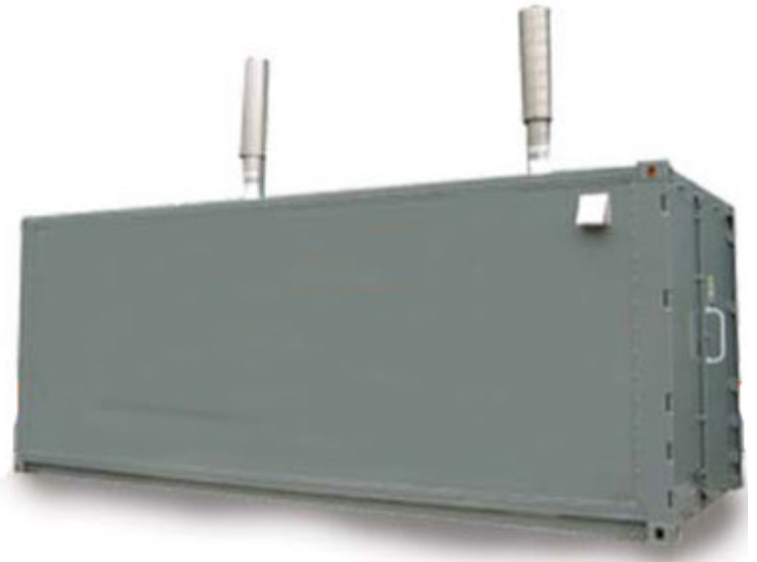
TET Custom

Total Evaporation Technology



***The LSI Self Contained
TET Waste Water Processing System Is
A Drop-In Ready To Use Solution.***

- **This system is available in standard or custom configurations to meet specific customer needs.**
- **Delivered by LSI to your site, ready to connect and operate Including all pumps, motors, fans, and heaters. No interior space or installation work. Fast drop-in installation just connect Your waste water, electric and NG or LPG to our ports.**



Self Contained TET

Total Evaporation Technology



Parts Washing

For closed loop parts washing operations, LSI can offer a wash area set up to match the needs of your customer's specific situation.

From self-contained wash stations to customized wash area designs, LSI is ready to work with you for an optimal solution.



TET 2 GPH

Total Evaporation Technology

Printing Inks / Dyes

Printing operations generate waste water contaminated with various chemicals and inks.



TET 35 GPH



Vehicle Washes



LSI TET Waste Water Evaporator Systems are a natural fit for any wash application.

- Bus Barns
- School District maintenance facilities
- Municipal wash stations
- Car and Truck washes



Self Contained TET



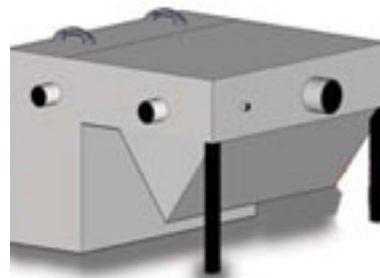
Metal Fabrication, Plating / Finishing



Classic applications for waste water treatment, oil separation from water, and filtering the “heavy water” prior to treatment.



**Advancing Media
Filter**



Oil Water Separator



TET 35 GPH

Total Evaporation Technology



Floor Scrubbing Waste Water

Portable or stationary, an LSI waste water evaporator is the perfect way to treat the waste stream from your scrubbing operation.



TET 35 GPH



Total Evaporation Technology

Marina Bilge Waste Water

- Treating marine waste water
- Treating wash water at the marina
- Treating contained spills



Oil Water Separator



TET 35 GPH

Total Evaporation Technology



Air Condensation

Waste water captured from drying operations in factories, mills and medical facilities.



Self Contained TET





Ceramic Coating Waste

Waste water generated from these applications are easily disposed of within environmental compliance.



Total Evaporation Technology



Oil Field Waste Cleaning

- TET Evaporators are used in the wash water recycle systems for Oil Field Service companies.
- LSI TET is effective at treating the wash water that is heavily laden with greases, hydraulics and oils from such items as; BOP's, down-hole drilling tools, fishing tools...
- If a new wash area is needed, or updates for an existing wash area are required, LSI can help.



Total Evaporation Technology

LSI Oil / Water Separators

- Limit your risk of violating federal and local regulations with LSI waste water evaporators and filters.
- Meets EPA Method 413.2 and European Standard EN 858-1 (99.99% Free Oil Removal).
- *You can team an LSI Oil/Water Separator with your LSI TET waste water evaporators for the most efficient and cost effective waste stream processing solution.*



Oil Water Separator



TET 20 GPH



Advancing Media Filter

Use the Advancing Media Filter with an LSI TET waste water evaporator for the most efficient and cost effective waste stream processing solution for these applications and more:

- **Parts Washing**
- **Printing Inks/Dyes**
- **Vehicle Washes**
- **Metal Fabrication**
- **Metal Finishing/Plating**
- **Floor Scrubbing Water**
- **Marina Bilge Water**
- **Air Condensation**
- **Ceramic Coating Wastes**
- **Compressor Condensate**
- **Degreasing Operations**
- **Screw Machine Shops**
- **Truck//Car Washes**
- **Coolants**
- **Most Aqueous Waste Streams**



Advancing Media Filter

Total Evaporation Technology



TET 2 GPH

Operating Costs

- **Operating costs for LSI waste water evaporators will vary depending on your fuel and electricity cost.**
- **For example, a TET 20 GPH waste water evaporator, the cost would be approximately \$.08 per US gallon if the natural gas cost is \$.70 per therm.**
- **Since the operating cost will also vary with the waste stream and processing schedule, please contact LSI for an estimation of the operating costs for your specific application.**



TET 7 GPH

Maintenance

- LSI TET waste water evaporators feature:
- Modular construction for easy cleaning, maintenance and fast component replacement including the evaporation tank.
- Stainless steel construction.
- Options for special fast release coatings.
- Removable lift out cleaning trays.
- Options for fully automatic operation, including automatic purging on our high capacity models.



Self Contained TET



Parts & Service

- LSI maintains a ready supply of all parts and components for all of our products.
- Call us for immediate service.



Total Evaporation Technology



Support LSI Offers

- On site training.
- Free waste water testing for all prospects.
- US Based Customer Service.
- US Technical Support.



Increase Profits

A Winning Combination
Lakeshore Sales Incorporated
TET Waste Water Evaporators
Oil/Water Separators
Media Filters



Total Evaporation Technology